



SLIDEWISE™

THE SMARTEST, MOST RELIABLE HATCH FOR YOUR ROOF

Aerodynamic Slidewise™ technology sets this roof hatch apart. Unlike traditional tip-up hatches, a Slidewise Roof Hatch opens horizontally and is unaffected by wind. That means it lasts longer, operates easier and keeps your people safe.

EASY TO INSTALL AND OPERATE:

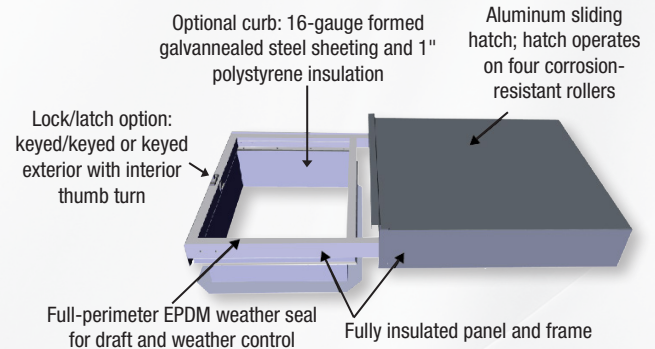
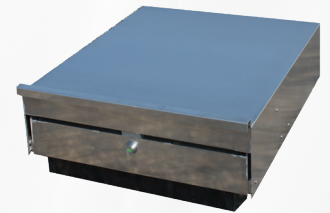
- Wind-resistant panel design reduces hatch maintenance and replacement costs
- Corrosion-resistant aluminum construction and stainless steel hardware
- Installs on new construction or to existing curb without modification to roofing materials
- 10-year product warranty
- 2" insulated panel and frame aids building efficiency (R-10)
- Low-profile design allows for installation where a traditional roof hatch may be problematic

INCREASED SAFETY:

- Personnel can easily exit and enter the roof hatch in any weather without the hatch panel slamming open/closed
- One-handed operation allows personnel to keep one hand on a ladder at all times

ADDITIONAL OPTIONS:

- Optional OSHA-compliant, Safety Railing System with self-closing safety gate
- Standard sizes in stock to fit existing openings
- Custom size and designs available
- Hatch curb



Optional Safety Railing System Available



OUR SAFETY DIVISION ALSO OFFERS:
Ladder safety gates, mezzanine gates and more!

701.746.4519 | 877.446.1519 | www.psaccesssolutions.com | 4psinfo@psindustries.com



STANDARD TECHNICAL DATA

MATERIAL:

- Hatch panel is 2" thick, fabricated from an internal welded aluminum framework; includes integrated pull handles, one (1) interior and one (1) exterior; panel constructed as one (1) piece
- Sheeting: .06" aluminum, factory bonded in place
- Hatch panel insulation is rigid polystyrene between internal framing members, full depth of panel cavity, nominal R-10
- Unitized track mounting frame; hatch operates on four (4) aluminum rollers with double-sealed stainless steel ball bearings
- EPDM bulb seals full perimeter for draft and weather control
- Lock/latch option: keyed/keyed or keyed exterior with interior thumb turn
- Curb (optional): Four-sided, 16-gauge, formed galvanized steel sheeting 12" high and 1" polystyrene insulation. Powder coat gray finish

FINISH:

- Mill finish aluminum on all surfaces, no paint applied

HARDWARE:

- Hardware/fasteners are stainless steel, type 18-8

ENGINEERING DATA:

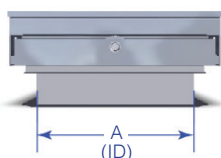
- Snow (service) downward load rating: 50 PSF
- Wind (service) upward load rating: 25 PSF
- Force to operate hatch: 11 lbs.

INSTALLATION:

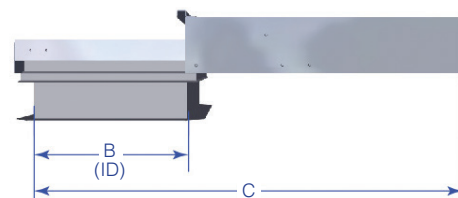
- Ships fully assembled (curbing optional); assembly required for optional Safety Railing System attachment
- Field flashing of roof curbing may be required (not included)

MEASURING GUIDE:

Lock Side View



Slide Direction View

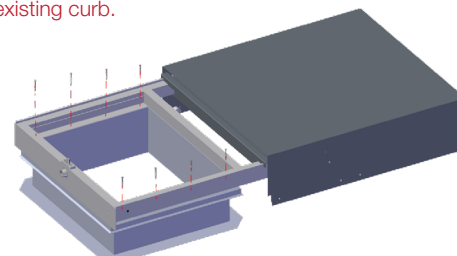
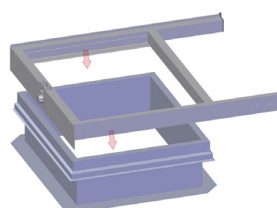


Product Number	Opening Size A	Opening Size B	Operational Envelope C	Weight
SRH-3030A	30"	30"	87"	114 lbs.
SRH-3630A	36"	30"	87"	120 lbs.
SRH-3636A	36"	36"	99"	131 lbs.

Note: Curb must extend a minimum of 3" above roof surface. Maximum curb thickness is 3-1/8".

INSTALLATION STEPS:

Installs on new construction or existing curb.



1. Apply provided gasketing around the perimeter of the top of the roof curb. Place hatch assembly squarely on level curb (panel not shown for clarification).

2. Open hatch panel and fasten in place through provided holes. If installing Safety Railing System, see Operation Manual for additional installation steps.

OSHA-COMPLIANT SAFETY RAILING SYSTEM:

Protect your roof hatch opening with an optional Safety Railing System. This four-sided railing system is designed specifically for the Slidewise Roof Hatch, ensuring a safe, stable grip for employees entering and exiting the roof hatch. Designed to meet federal OSHA safety railing requirements.

