



# SLIDEWISE II

## THE SMARTEST, MOST RELIABLE HATCH FOR YOUR ROOF

Aerodynamic Slidewise technology sets this roof hatch apart. Unlike traditional tip-up hatches, a Slidewise Roof Hatch opens horizontally and is unaffected by wind. That means it lasts longer, operates easier and keeps your people safe.

### EASY TO INSTALL AND OPERATE:

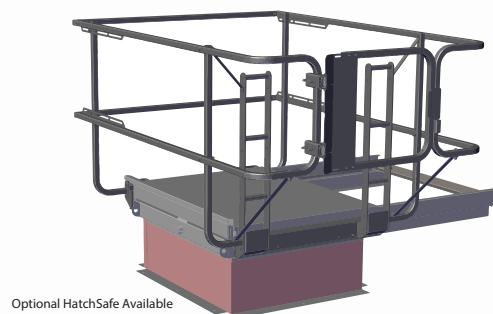
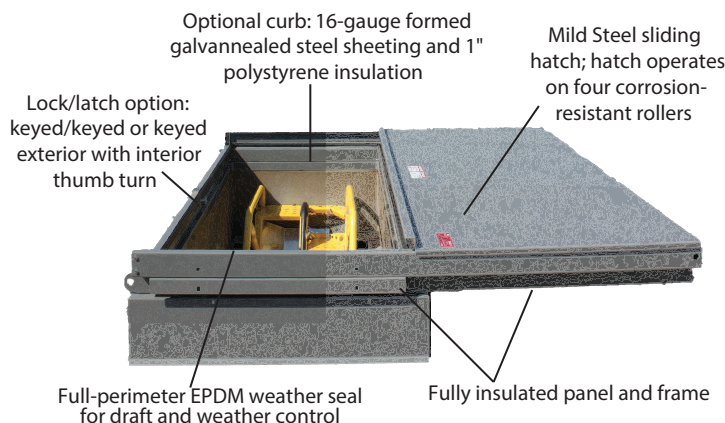
- Wind-resistant panel design reduces hatch maintenance and replacement costs
- Mild steel construction with powder coat gray finish
- Installs on new construction or to existing curb without modification to roofing materials
- Five year product warranty
- 3" insulated panel (R11) and 1-1/2" frame (R7.5) aids building efficiency
- Low-profile design allows for installation where a traditional roof hatch may be problematic

### INCREASED SAFETY:

- Personnel can easily exit and enter the roof hatch in any weather without the hatch panel slamming open or closed
- One-handed operation allows personnel to keep one hand on a ladder at all times

### ADDITIONAL OPTIONS:

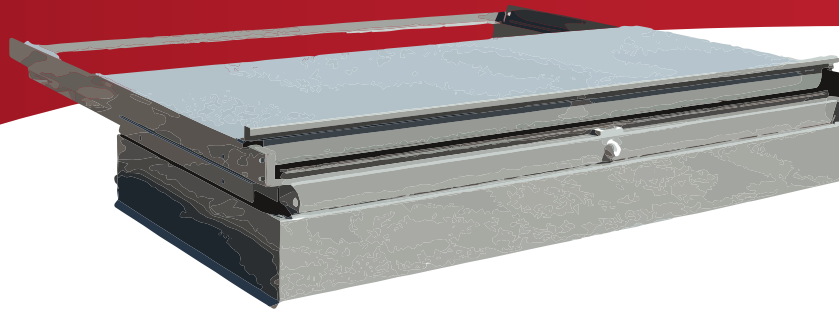
- Optional OSHA-compliant HatchSafe Safety Railing
- Standard sizes in stock to fit existing openings
- Custom size and designs available
- Hatch curb



Optional HatchSafe Available

**PS Safety Access**<sup>TM</sup>  
*We Won't Let You Down*

**OUR SAFETY DIVISION ALSO OFFERS:**  
Ladder safety gates, mezzanine gates and more!



## STANDARD TECHNICAL DATA

### MATERIAL:

- Hatch panel is 3-1/3" thick, fabricated from an internal welded frameowrk. Includes integrated pull handles, one (1) interior and one (1) exterior. Panel constructed as one (1) piece.
- Sheeting: 16 ga galvanealed, factory bonded in place
- Hatch panel insulation is fiberglass BATT between internal framing members, full depth of panel cavity. Nominal R-11.
- Unitized track mounting frame. Hatch operates on four (4) aluminum rollers with double-sealed stainless steel ball bearings
- EPDM bulb seals full perimeter for draft and weather control.
- Lock/latch option: keyed/keyed or keyed exterior with interior thumb turn.
- Curb (optional): Four-sided, 16-gauge, formed galvanized steel sheeting 12" high and 1-1/2" polystyrene insulation. Powder coat gray finish.

### FINISH:

- Powder coated gray on all unfinished surfaces.

### HARDWARE:

- Hardware/ fasteners are zinc plated.

### ENGINEERING DATA:

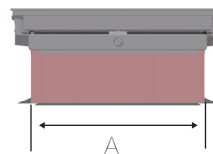
- Snow (service) downward load rating: 50 PSF.
- Wind (service) upward load rating: 25 PSF

### INSTALLATION:

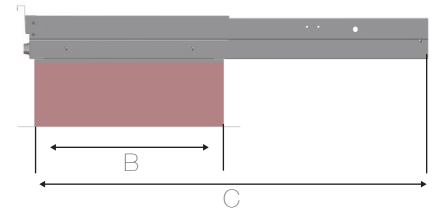
- Ships fully assembled (curbing optional.) Assembly required for optional HatchSafe.
- Field flashing of roof curbing may be required (not included.)

### MEASURING GUIDE:

Lock Side View



Slide Direction View

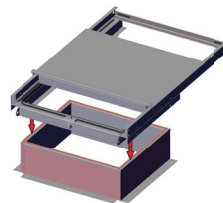


PRODUCT NUMBER	OPENING SIZE A	OPENING SIZE B	OPERATIONAL ENVELOPE C	WEIGHT
SRH-3030M	30"	30"	68"	231 lbs.
SRH-3630M	36"	30"	68"	249 lbs.
SRH-3636M	36"	36"	80"	274 lbs.

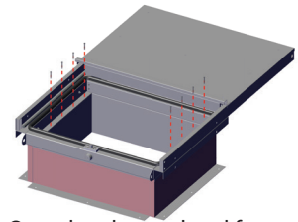
NOTE: Maximum curb thickness is 3-1/8"

### INSTALLATION STEPS:

Installs on new construction or existing curb



1. Apply provided gasketing around the perimeter of the top of the roof curb. Place hatch assembly squarely on level curb.



2. Open hatch panel and fasten in place through provided holes. If installing HatchSafe, see Operation Manual for additional installation steps.

### HatchSafe

Protect your roof hatch opening with an optional HatchSafe. This four-sided railing system is design specifically to ensure a safe, stable grip for employees entering and exiting the roof hatch. Designed to meet federal OSHA safety railing requirements.

